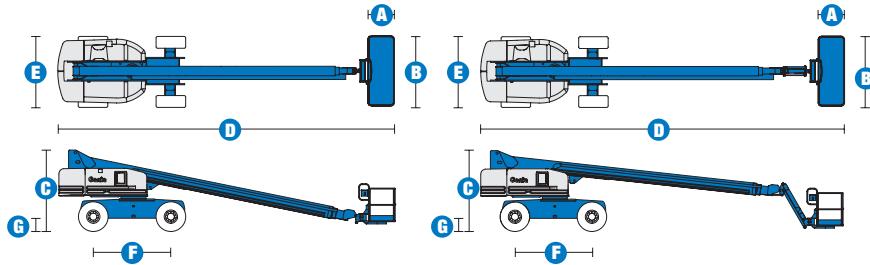


Specifications



MODELS	S™-80		S™-85	
MEASUREMENTS	US	Metric	US	Metric
Working height maximum*	86 ft	26.38 m	91 ft	27.90 m
Platform height maximum	80 ft	24.38 m	85 ft	25.90 m
Horizontal reach maximum	72 ft 5 in	22.07 m	77 ft 5 in	23.60 m
Below ground reach	10 ft 3 in	3.12 m	13 ft 9 in	4.19 m
A Platform length - 8 ft model	3 ft	.91 m	3 ft	.91 m
Platform length - 6 ft model	2 ft 6 in	.76 m	2 ft 6 in	.76 m
B Platform width - 8 ft model	8 ft	2.44 m	8 ft	2.44 m
Platform width - 6 ft model	6 ft	1.83 m	6 ft	1.83 m
C Height - stowed	9 ft 2 in	2.80 m	9 ft 2 in	2.80 m
D Length - stowed	37 ft 3 in	11.35 m	40 ft 7 in	12.37 m
Length - transport (jib tucked under)	—	—	35 ft	10.67 m
E Width - axles retracted	8 ft	2.44 m	8 ft	2.44 m
Width - axles extended	10 ft 1 in	3.07 m	10 ft 1 in	3.07 m
F Wheelbase	9 ft	2.74 m	9 ft	2.74 m
G Ground clearance - center	1 ft 5 in	.43 m	1 ft 5 in	.43 m

PRODUCTIVITY

Lift capacity - 8 ft platform	500 lbs	227 kg	500 lbs	227 kg
Lift capacity - 6 ft platform	600 lbs	272 kg	500 lbs	227 kg
Platform rotation	160°		160°	
Vertical jib rotation	—		135°	
Turntable rotation	360° continuous		360° continuous	
Turntable tailswing - axle retracted	4 ft 8 in	1.42 m	4 ft 8 in	1.42 m
Turntable tailswing - axle extended	3 ft 8 in	1.12 m	3 ft 8 in	1.12 m
Drive speed - stowed - 2WD/4WD	3.5 mph	5.6 km/h	3.5 mph	5.6 km/h
Drive speed - raised/extended	0.68 mph	1.1 km/h	0.68 mph	1.1 km/h
Gradeability - 2WD - stowed**	30%		30%	
Gradeability - 4WD - stowed**	45%		45%	
Turning radius - axle extended: inside	10 ft 8 in	3.25 m	10 ft 8 in	3.25 m
outside	23 ft	7.01 m	23 ft	7.01 m
Controls	12V DC proportional		12V DC proportional	
Tires - RT lug	385/65 D22.5		385/65 D22.5	

POWER

Power source	Deutz TD2011 L04i 4 cylinder turbo diesel 78 hp (58.1 kW) Perkins 804D-33 4 cylinder diesel 63 hp (47 kW) Continental TME27 4 cylinder Gas/LPG 74 hp (56 kW)			
Auxiliary power unit	12V DC		12V DC	
Hydraulic tank capacity	45 gal	170 L	45 gal	170 L
Fuel tank capacity	33 gal	125 L	33 gal	125 L

WEIGHT***

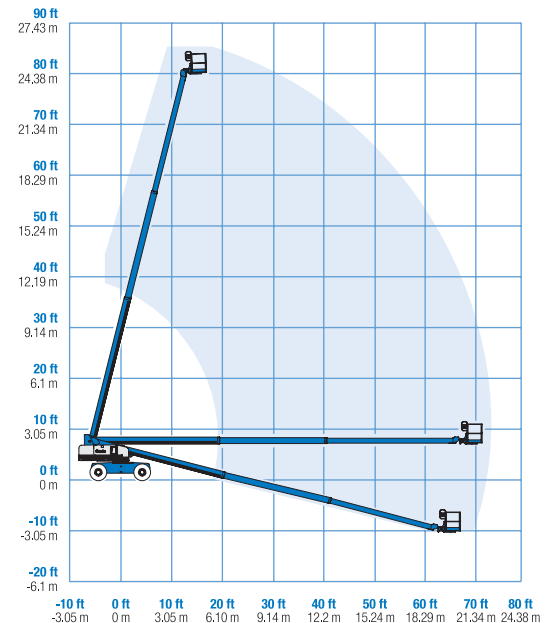
2WD	33,230 lbs	15,073 kg	35,710 lbs	16,198 kg
4WD	33,380 lbs	15,141 kg	35,860 lbs	16,266 kg

STANDARDS COMPLIANCE

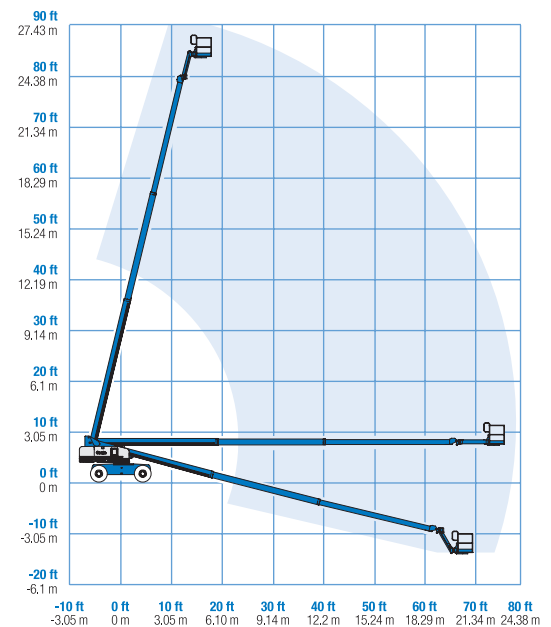
ANSI A92.5, CSA B354.4, CE Compliance, AS 1418.10

www.genieindustries.com

RANGE OF MOTION S™-80



RANGE OF MOTION S™-85



* The metric equivalent of working height adds 2 m to platform height. U.S. adds 6 ft to platform height.

** Gradeability applies to driving on slopes. See operator's manual for details regarding slope ratings.

*** Weight will vary depending on options and/or country standards.

Features

EASILY CONFIGURED TO MEET YOUR NEEDS

PLATFORM OPTIONS

- Steel 8 ft (2.44 m) (standard)
- Steel 6 ft (1.83 m)
- Steel 6** or 8 ft (1.83 or 2.44 m) tri-entry
- Steel 4 ft (1.22 m)**
- Steel 5 ft (1.52 m)**

JIB OPTIONS

- Non-jib
- 5 ft (1.52 m) jib boom

POWER OPTIONS

- Deutz turbo diesel 78 hp (58.1 kW)
- Perkins diesel 63 hp (50 kW)
- Continental Gas/LPG 74 hp (56 kW)

DRIVE OPTIONS

- 2WD
- 4WD

AXLE

- Active oscillation

TIRE OPTIONS

- Rough terrain air-filled (standard)
- Rough terrain foam-filled
- Rough terrain non-marking air or foam-filled
- High flotation air-filled
- Sealant treated air-filled

* Available on select models

** Not available on CE machines

STANDARD FEATURES

MEASUREMENTS

S™-80

- 86 ft (26.38 m) working height
- 72 ft 5 in (22.07 m) horizontal reach
- 600 lb (272 kg) lift capacity with 6 ft (1.83 m) platform
- 500 lb (227 kg) lift capacity with 8 ft (2.44 m) platform

S™-85

- 91 ft (27.90 m) working height
- 77 ft 5 in (23.60 m) horizontal reach
- 500 lb (227 kg) lift capacity with 6 ft (1.83 m) platform
- 500 lb (227 kg) lift capacity with 8 ft (2.44 m) platform

PRODUCTIVITY

- Self-leveling platform
- Hydraulic platform rotation
- Fully proportional Hall effect joystick controls
- Drive enable
- AC power cord to platform
- Horn
- Hour meter
- Tilt alarm
- Descent alarm
- 360° continuous turntable rotation
- Locking low profile turntable covers
- Positive traction drive
- Two speed wheel motors

POWER

- All engines are emissions compliant
- 12V DC auxiliary power
- Anti-restart engine protection
- Auto engine fault shutdown
- Catalytic converter muffler (Continental)
- Engine block heater (Continental)



OPTIONS & ACCESSORIES

PRODUCTIVITY

- 750 lb capacity, S-80 only
- Platform swing gate
- Half mesh platform inserts with swing gate
- Platform top auxiliary rail
- Arc Pro 275™ Heavy-Duty Welder package
- Welder Ready package
- Weld leads to platform
- Air line to platform
- Hydraulic oil cooler
- Fire resistant hydraulic oil
- Biodegradable hydraulic oil
- Basic hostile environment kit
- Deluxe hostile environment kit
- Standard aircraft protection package
- Deluxe aircraft protection package (6 ft platform only)
- Thumb rocker steer
- Tool tray
- Fluorescent tube caddy
- Pipe cradle (pair)
- Alarm package
- Panel cradle package*
- Platform work lights
- Front driving lights
- Lockable platform control box covers
- Second battery
- Tow package

POWER

- Engine gauge package
- AC generator packages (110V/60Hz, 3000W or 220V/50Hz, 2500W)
- Cold Weather Packages
- Arctic Packages
- Diesel scrubber/spark arrestor muffler
- Diesel spark arrestor muffler
- Retained key selector switch
- LPG tank only, steel, 33.5 lb (15.19 kg) capacity
- Additional LPG tank with carrier

Genie United States

18340 NE 76th Street
P.O. Box 97030
Redmond, Washington 98073-9730

Telephone **+1 (425) 881-1800**
Toll Free in USA/Canada **+1 (800) 536-1800**
Fax +1 (425) 883-3475

Genie Europe

Millennium House
Brunel Drive
Newark NG24 2DE
UK

Telephone **+44 (0)1476 584333**
Fax +44 (0)1476 584334

Email: infoeurope@genieind.com

Distributed By:

Effective Date: July, 2008. Product specifications and prices are subject to change without notice or obligation. The photographs and/or drawings in this document are for illustrative purposes only. Refer to the appropriate Operator's Manual for instructions on the proper use of this equipment. Failure to follow the appropriate Operator's Manual when using our equipment or to otherwise act irresponsibly may result in serious injury or death. The only warranty applicable to our equipment is the standard written warranty applicable to the particular product and sale and we make no other warranty, express or implied. Products and services listed may be trademarks, service marks or trade-names of Terex Corporation, Genie Industries, Inc. and/or their subsidiaries in the U.S.A. and many other countries and all rights are reserved. Terex® is a Registered Trademark of Terex Corporation in the U.S.A. and many other countries. Genie® is a Registered Trademark of Genie Industries, Inc. in the U.S.A. and many other countries. Genie is a Terex Company. © 2008 Terex Corporation.